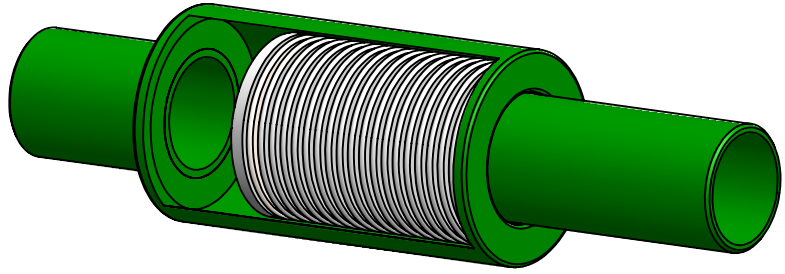


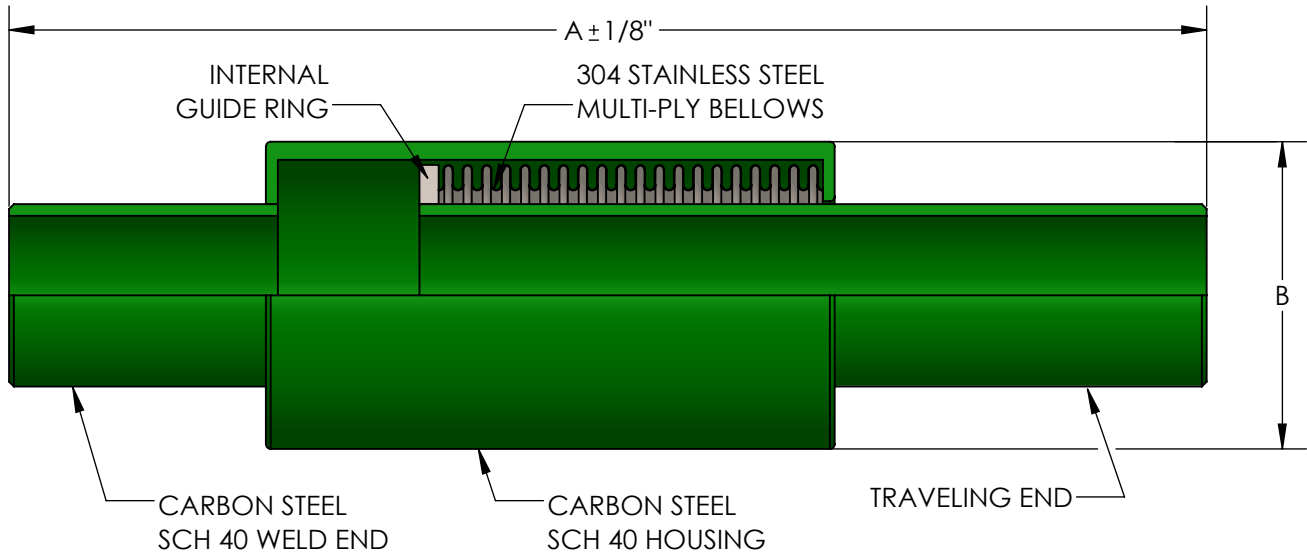
**MODEL HPW2
HIGH PRESSURE
EXTERNALLY PRESSURIZED
EXPANSION COMPENSATOR**

HOUSING CUT AWAY TO SHOW BELLOWS



DESIGN DATA

TEMPERATURE: 750° (399°C)
PRESSURE: 175 PSI (1206 kPa)
TEST PRESSURE: 250 PSI (1809 kPa)
AXIAL COMPRESSION: 2" (50mm)
AXIAL EXTENSION: 1/2" (13mm)



THIS EXPANSION JOINT IS DESIGNED FOR AXIAL MOVEMENT ONLY. PIPE MUST BE PROPERLY GUIDED AND ANCHORED PER THE RECOMMENDATIONS OF THE EXPANSION JOINT MANUFACTURERS ASSOCIATION.

| QTY | PART NUMBER | PIPE SIZE | | A | B | EFFECTIVE AREA (in ²) | SPRING RATE (lb/in) | WEIGHT | PROJECT INFORMATION |
|-----|-------------|-----------|-----|---------|--------|-----------------------------------|---------------------|--------|---------------------|
| | | INCH | MM | | | | | | |
| | HPW20075 | 3/4" | 20 | 12-3/4" | 3" | 1.5 | 81 | 3 | |
| | HPW20100 | 1" | 25 | 13-1/4" | 3" | 2.1 | 88 | 4 | |
| | HPW20125 | 1-1/4" | 32 | 13-1/4" | 3" | 3.3 | 75 | 5 | |
| | HPW20150 | 1-1/2" | 38 | 14-5/8" | 3-1/2" | 4.3 | 121 | 7 | |
| | HPW20200 | 2" | 50 | 14-5/8" | 4" | 6.3 | 143 | 10 | |
| | HPW20250 | 2-1/2" | 65 | 16" | 5" | 8.8 | 187 | 14 | |
| | HPW20300 | 3" | 80 | 16" | 5-1/2" | 13.1 | 230 | 18 | |
| | HPW20400 | 4" | 100 | 16-3/8" | 6-5/8" | 20.8 | 484 | 25 | |

NSF 372 - LEAD FREE

The wetted surface of this product contacted by consumable water contains less than one quarter of one percent (0.25%) of lead by weight. Material complies with state codes and standards, where applicable, requiring reduced lead content.

CUSTOMER: _____

PROJECT: _____

ENGINEER: _____

| | |
|---|---|
| REV. 1 | Edit B dimension to 3" on lines 1 and 2. DATE: 08/27/2019 |
| | |
| 2323 W. HUBBARD ST. CHICAGO, IL 60612 TEL: 312-738-3800 FAX: 312-738-0415 WWW.METRAFLEX.COM | |
| MODEL HPW2 HIGH PRESSURE EXPANSION COMPENSATOR | |
| DRAWN BY: DKISH | DATE: 9/3/2015 |
| APPROVED: JC | DATE: 9/3/2015 |
| SCALE: N/A | DRAWING NUMBER: HPW2 |